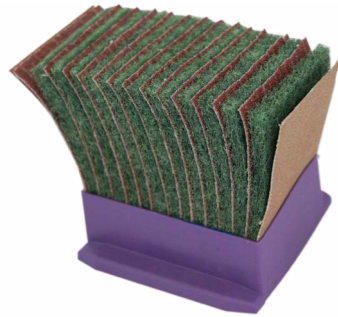
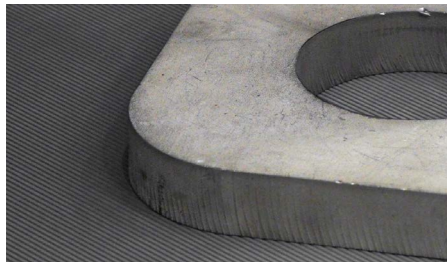


GREEN FLEX

Flexible Mix
40/60G Abrasive + Green Fleece



DEBURRING ○○○○
EDGE ROUNDING ●●●●

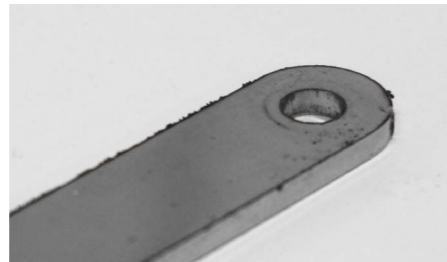


VIOLET PLUS

3-row cut design
60G Ceramic + Purple Fleece



●○○○
●●●○

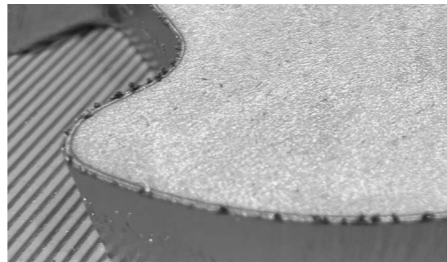


RED FURY

3-row cut design
50G Ceramic + Purple Fleece



●●○○
●●○○



RED ANGLED

25° Oblique
40G Hard Ceramic



●●●○
○○○○

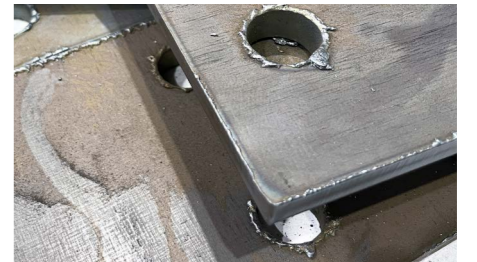


SILVER HAMMER

55° Shore
Firing Pin



DESLAGGING ●●●●
○○○○



← EDGE ROUNDING

DEBURRING →

DESLAGGING →

01. CROSSBELT SYSTEM



A crossbelt system with counter-rotating abrasive blocks is used to make edge rounding on laser, punch, shear or waterjet cut parts.

This system is even more capable with the new blocks developed to remove light burrs or slag from the edges of the part.

02. PROFITABILITY IN A SYSTEM

_ Available for all machines with a **C station** including **EVO**

_ Use the **same machine** for **different types of parts** without requiring a new or complex system

-> **HIGHER ROI**

03. WHY DO YOU NEED DIFFERENT BLOCKS?

OPERATION

- _ Balancing between inner and outer edges
- _ Remove light burrs and/or slag

BENEFITS

- _ Cost efficiency in consumables
- _ Easily exchange operation in the same system
- _ New capabilities for C and C EVO machines
- _ Development of different blocks to suit your needs

04. OTHER SPECIALITY BLOCKS AVAILABLE

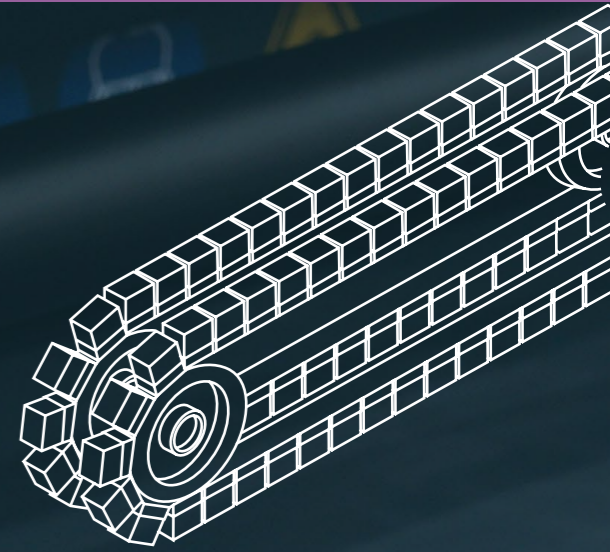
-> OXIDE REMOVAL BLOCKS



_ improve the ability of the steel parts to be coated by brushing the oxide layer away and avoiding paint to flake-off through impacts. Ideal for steel parts laser or oxy cut up to 16mm thick.

EDGE ROUNDING AND DEBURRING BLOCKS

CONSUMABLES FOR CROSS BELT SYSTEM



NS
MÁQUINAS