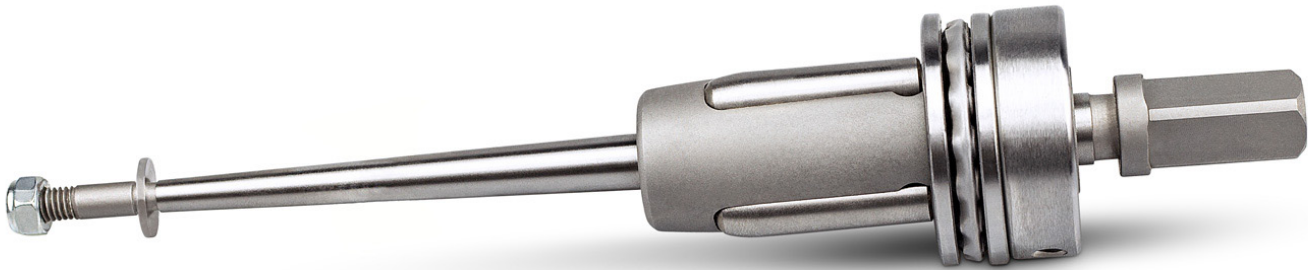




## No. 5- Tube Expander for hand-use, Dudgeon pattern

Art.-No.	Article	Expansion (mm)	Length of rolls (mm)
1W05701200	Tube Expander complete, 1/2"	10.0 - 11.5	20
1W05705800	Tube Expander complete, 5/8"	13.0 - 14.6	20
1W05703400	Tube Expander complete, 3/4"	16.0 - 18.3	20
1W05707800	Tube Expander complete, 7/8"	19.0 - 22.4	20
1W05710000	Tube Expander complete, 1"	22.0 - 25.0	25
1W05711800	Tube Expander complete, 1 1/8"	25.0 - 28.6	25
1W05711400	Tube Expander complete, 1 1/4"	26.0 - 30.0	30
1W05713800	Tube Expander complete, 1 3/8"	29.0 - 33.0	30
1W05711200	Tube Expander complete, 1 1/2"	32.0 - 38.0	30
1W05715800	Tube Expander complete, 1 5/8"	35.0 - 42.0	30
1W05713400	Tube Expander complete, 1 3/4"	37.0 - 44.0	30
1W05717800	Tube Expander complete, 1 7/8"	40.0 - 46.0	30
1W05720000	Tube Expander complete, 2"	44.0 - 52.0	30
1W05721800	Tube Expander complete, 2 1/8"	47.0 - 55.0	30
1W05721400	Tube Expander complete, 2 1/4"	50.0 - 58.0	30
1W05721200	Tube Expander complete, 2 1/2"	56.0 - 66.0	30
1W05725800	Tube Expander complete, 2 5/8"	60.0 - 70.9	35
1W05723400	Tube Expander complete, 2 3/4"	63.0 - 72.9	35
1W05730000	Tube Expander complete, 3"	68.0 - 79.8	35
1W05731400	Tube Expander complete, 3 1/4"	74.0 - 87.8	35
1W05731200	Tube Expander complete, 3 1/2"	80.0 - 93.7	35
1W05733400	Tube Expander complete, 3 3/4"	85.0 - 97.8	35
1W05740000	Tube Expander complete, 4"	90.0 - 101.8	35
1W05741400	Tube Expander complete, 4 1/4"	98.0 - 113.8	35

Other dimensions on request



## No. 9 - Self-feeding Tube Expander

Art.-No.	Article	Expansion (mm)	Length of rolls (mm)	Length of expansion (mm)	Square shaft
1W09010000	Tube Expander complete, 10 mm	10.0 - 11.5	20	15	9
1D09010000	Mandrel for Tube Expander, 10 mm				
1G09010000	Cage for Tube Expander, 10 mm				
1R090100S0	Rolls for Tube Expander, 10 mm				
1W09011000	Tube Expander complete, 11 mm	11.0 - 12,7	20	15	9
1D09011000	Mandrel for Tube Expander, 11 + 12 mm				
1G09011000	Cage for Tube Expander, 11 mm				
1R090110S0	Rolls for Tube Expander, 11 mm				
1W09012000	Tube Expander complete, 12 mm	12.0 - 13,7	20	15	9
1D09011000	Mandrel for Tube Expander, 11 + 12 mm				
1G09012000	Cage for Tube Expander, 12 mm				
1R090120S0	Rolls for Tube Expander, 12 + 13 mm				
1W09013000	Tube Expander complete, 13 mm	13.0 - 14,7	20	15	9
1D09013000	Mandrel for Tube Expander, 13 + 14 mm				
1G09013000	Cage for Tube Expander, 13 mm				
1R090120S0	Rolls for Tube Expander, 12 + 13 mm				
1W09014000	Tube Expander complete, 14 mm	14.0 - 15,7	20	15	9
1D09013000	Mandrel for Tube Expander, 13 + 14 mm				
1G09014000	Cage for Tube Expander, 14 mm				
1R090140S0	Rolls for Tube Expander, 14 mm				
1W09015000	Tube Expander complete, 15 mm	15.0 - 17.0	25	20	9
1D09015000	Mandrel for Tube Expander, 15 + 16 mm				
1G09015000	Cage for Tube Expander, 15 mm				
1R090150S0	Rolls for Tube Expander, 15 mm				
1W09016000	Tube Expander complete, 16 mm	16.0 - 18.0	25	20	9
1D09015000	Mandrel for Tube Expander, 15 + 16 mm				
1G09016000	Cage for Tube Expander, 16 mm				
1R090160S0	Rolls for Tube Expander, 16 + 17 mm				
1W09017000	Tube Expander complete, 17 mm	17.0 - 19.0	25	20	9
1D09017000	Mandrel for Tube Expander, 17 mm				
1G09017000	Cage for Tube Expander, 17 mm				
1R090160S0	Rolls for Tube Expander, 16 + 17 mm				

## No. 9 - Self-feeding Tube Expander

Art.-No.	Article	Expansion (mm)	Length of rolls (mm)	Length of expansion (mm)	Square shaft
1W09018000	Tube Expander complete, 18 mm	18.0 - 20.3	25	20	9
1D09018000	Mandrel for Tube Expander, 18 + 19 mm				
1G09018000	Cage for Tube Expander, 18 mm				
1R090180S0	Rolls for Tube Expander, 18 mm				
1W09019000	Tube Expander complete, 19 mm	19.0 - 21.3	25	20	9
1D09018000	Mandrel for Tube Expander, 18 + 19 mm				
1G09019000	Cage for Tube Expander, 19 mm				
1R090190S0	Rolls for Tube Expander, 19 + 20 mm				
1W09020000	Tube Expander complete, 20 mm	20.0 - 23.3	25	20	9
1D09020000	Mandrel for Tube Expander, 20 + 21 mm				
1G09020000	Cage for Tube Expander, 20 mm				
1R090190S0	Rolls for Tube Expander, 19 + 20 mm				
1W09021000	Tube Expander complete, 21 mm	21.0 - 23.8	30	22	9
1D09020000	Mandrel for Tube Expander, 20 + 21 mm				
1G09021000	Cage for Tube Expander, 21 mm				
1R090210S0	Rolls for Tube Expander, 21 + 22 mm				
1W09022000	Tube Expander complete, 22 mm	22.0 - 24.8	30	22	9
1D09022000	Mandrel for Tube Expander, 22 mm				
1G09022000	Cage for Tube Expander, 22 mm				
1R090210S0	Rolls for Tube Expander, 21 + 22 mm				
1W09023000	Tube Expander complete, 23 mm	23.0 - 26.4	30	22	9
1D09023000	Mandrel for Tube Expander, 23 + 24 mm				
1G09023000	Cage for Tube Expander, 23 mm				
1R090230S0	Rolls for Tube Expander, 23 mm				
1W09024000	Tube Expander complete, 24 mm	24.0 - 27.4	30	22	9
1D09023000	Mandrel for Tube Expander, 23 + 24 mm				
1G09024000	Cage for Tube Expander, 24 mm				
1R090240S0	Rolls for Tube Expander, 24 + 25 mm				
1W09025000	Tube Expander complete, 25 mm	25.0 - 28.4	30	22	9
1D09025000	Mandrel for Tube Expander, 25 mm				
1G09025000	Cage for Tube Expander, 25 mm				
1R090240S0	Rolls for Tube Expander, 24 + 25 mm				
1W09026000	Tube Expander complete, 26 mm	26.0 - 30.6	35	27	12
1D09026000	Mandrel for Tube Expander, 26 mm				
1G09026000	Cage for Tube Expander, 26 mm				
1R090260S0	Rolls for Tube Expander, 26 mm				
1W09029000	Tube Expander complete, 29 mm	29.0 - 34.1	35	27	12
1D09029000	Mandrel for Tube Expander, 29 mm				
1G09029000	Cage for Tube Expander, 29 mm				
1R090290S0	Rolls for Tube Expander, 29 mm				
1W09032000	Tube Expander complete, 32 mm	32.0 - 37.1	35	27	12
1D09032000	Mandrel for Tube Expander, 32 mm				
1G09032000	Cage for Tube Expander, 32 mm				
1R090320S0	Rolls for Tube Expander, 32 mm				

## No. 9 - Self-feeding Tube Expander

Art.-No.	Article	Expansion (mm)	Length of rolls (mm)	Length of expansion (mm)	Square shaft
1W09035000	Tube Expander complete, 35 mm	35.0 - 41.2	35	27	14
1D09035000	Mandrel for Tube Expander, 35 mm				
1G09035000	Cage for Tube Expander, 35 mm				
1R09035050	Rolls for Tube Expander, 35 + 37 mm				
1W09037000	Tube Expander complete, 37 mm	37.0 - 43.1	35	27	14
1D09037000	Mandrel for Tube Expander, 37 mm				
1G09037000	Cage for Tube Expander, 37 mm				
1R09035050	Rolls for Tube Expander, 35 + 37 mm				
1W09040000	Tube Expander complete, 40 mm	40.0 - 46.1	35	27	14
1D09040000	Mandrel for Tube Expander, 40 mm				
1G09040000	Cage for Tube Expander, 40 mm				
1R09040050	Rolls for Tube Expander, 40 mm				
1W09044000	Tube Expander complete, 44 mm	44.0 - 50.4	40	30	16
1D09044000	Mandrel for Tube Expander, 44 mm				
1G09044000	Cage for Tube Expander, 44 mm				
1R09044050	Rolls for Tube Expander, 44 mm				
1W09047000	Tube Expander complete, 47 mm	47.0 - 54.2	40	30	16
1D09047000	Mandrel for Tube Expander, 47 + 50 mm				
1G09047000	Cage for Tube Expander, 47 mm				
1R09047050	Rolls for Tube Expander, 47 mm				
1W09050000	Tube Expander complete, 50 mm	50.0 - 57.1	40	30	16
1D09047000	Mandrel for Tube Expander, 47 + 50 mm				
1G09050000	Cage for Tube Expander, 50 mm				
1R09050050	Rolls for Tube Expander, 50 mm				
1W09056000	Tube Expander complete, 56 mm	56.0 - 63.1	40	30	16
1D09056000	Mandrel for Tube Expander, 56 mm				
1G09056000	Cage for Tube Expander, 56 mm				
1R09056050	Rolls for Tube Expander, 56 mm				
1W09060000	Tube Expander complete, 60 mm	60.0 - 69.9	45	35	18
1D09060000	Mandrel for Tube Expander, 60 mm				
1G09060000	Cage for Tube Expander, 60 mm				
1R09060050	Rolls for Tube Expander, 60 + 63 mm				
1W09063000	Tube Expander complete, 63 mm	63.0 - 72.7	45	35	18
1D09063000	Mandrel for Tube Expander, 63 mm				
1G09063000	Cage for Tube Expander, 63 mm				
1R09060050	Rolls for Tube Expander, 60 + 63 mm				
1W09068000	Tube Expander complete, 68 mm	68.0 - 77.5	45	35	22
1D09068000	Mandrel for Tube Expander, 63 + 74 mm				
1G09068000	Cage for Tube Expander, 68 mm				
1R09068050	Rolls for Tube Expander, 68 mm				
1W09074000	Tube Expander complete, 74 mm	74.0 - 83.6	45	35	22
1D09068000	Mandrel for Tube Expander, 63 + 74 mm				
1G09074000	Cage for Tube Expander, 74 mm				
1R09074050	Rolls for Tube Expander, 74 mm				



## No. 9 - Self-feeding Tube Expander

Art.-No.	Article	Expansion (mm)	Length of rolls (mm)	Length of expansion (mm)	Square shaft
1W09080000	Tube Expander complete, 80 mm	80.0 - 92.0	50	40	22
1D09080000	Mandrel for Tube Expander, 80 mm				
1G09080000	Cage for Tube Expander, 80 mm				
1R09080050	Rolls for Tube Expander, 80 mm				
1W09085000	Tube Expander complete, 85 mm	85.0 - 96.2	50	40	26
1D09085000	Mandrel for Tube Expander, 85 mm				
1G09085000	Cage for Tube Expander, 85 mm				
1R09085050	Rolls for Tube Expander, 85 mm				
1W09090000	Tube Expander complete, 90 mm	90.0 - 102.0	50	40	26
1D09090000	Mandrel for Tube Expander, 90 mm				
1G09090000	Cage for Tube Expander, 90 mm				
1R09090050	Rolls for Tube Expander, 90 mm				
1W09098000	Tube Expander complete, 98 mm	98.0 - 109.9	50	40	26
1D09098000	Mandrel for Tube Expander, 98 mm				
1G09098000	Cage for Tube Expander, 98 mm				
1R09098050	Rolls for Tube Expander, 98 mm				

Other dimensions on request



## No. 11 - Combined rolling and flaring Tube Expander

Art.-No.	Article	Expansion (mm)	Length of rolls (mm)	Length of expansion (mm)	Square shaft
1W11014000	Tube Expander complete, 14 mm	14.0 - 15.7	20	15	9
1D09013000	Mandrel for Tube Expander, 14 mm				
1G11014000	Cage for Tube Expander, 14 mm				
1R110140S0	Rolls for Tube Expander, 14 mm				
1W11015000	Tube Expander complete, 15 mm	15.0 - 16.8	25	20	9
1D09015000	Mandrel for Tube Expander, 15 + 16 mm				
1G11015000	Cage for Tube Expander, 15 mm				
1R110150S0	Rolls for Tube Expander, 15 mm				
1W11016000	Tube Expander complete, 16 mm	16.0 - 17.8	25	20	9
1D09015000	Mandrel for Tube Expander, 15 + 16 mm				
1G11016000	Cage for Tube Expander, 16 mm				
1R110160S0	Rolls for Tube Expander, 16 + 17 mm				
1W11017000	Tube Expander complete, 17 mm	17.0 - 18.8	25	20	9
1D09017000	Mandrel for Tube Expander, 17 mm				
1G11017000	Cage for Tube Expander, 17 mm				
1R110160S0	Rolls for Tube Expander, 16 + 17 mm				
1W11018000	Tube Expander complete, 18 mm	18.0 - 20.5	25	20	9
1D09018000	Mandrel for Tube Expander, 18 + 19 mm				
1G11018000	Cage for Tube Expander, 18 mm				
1R110180S0	Rolls for Tube Expander, 18 mm				
1W11019000	Tube Expander complete, 19 mm	19.0 - 21.5	25	20	9
1D09018000	Mandrel for Tube Expander, 18 + 19 mm				
1G11019000	Cage for Tube Expander, 19 mm				
1R110190S0	Rolls for Tube Expander, 19 + 20 mm				
1W11020000	Tube Expander complete, 20 mm	20.0 - 23.1	25	20	9
1D09020000	Mandrel for Tube Expander, 20 + 21 mm				
1G11020000	Cage for Tube Expander, 20 mm				
1R110190S0	Rolls for Tube Expander, 19 + 20 mm				
1W11021000	Tube Expander complete, 21 mm	21.0 - 23.6	30	22	9
1D09020000	Mandrel for Tube Expander, 20 + 21 mm				
1G11021000	Cage for Tube Expander, 21 mm				
1R110210S0	Rolls for Tube Expander, 21 + 22 mm				

## No. 11 - Combined rolling and flaring Tube Expander

Art.-No.	Article	Expansion (mm)	Length of rolls (mm)	Length of expansion (mm)	Square shaft
1W11022000	Tube Expander complete, 22 mm	22.0 - 24.5	30	22	9
1D09022000	Mandrel for Tube Expander, 22 mm				
1G11022000	Cage for Tube Expander, 22 mm				
1R110210S0	Rolls for Tube Expander, 21 + 22 mm				
1W11023000	Tube Expander complete, 23 mm	23.0 - 26.1	30	22	9
1D09023000	Mandrel for Tube Expander, 23 + 24 mm				
1G11023000	Cage for Tube Expander, 23 mm				
1R110230S0	Rolls for Tube Expander, 23 mm				
1W11024000	Tube Expander complete, 24 mm	24.0 - 27.1	30	22	9
1D09023000	Mandrel for Tube Expander, 23 + 24 mm				
1G11024000	Cage for Tube Expander, 24 mm				
1R110240S0	Rolls for Tube Expander, 24 + 25 mm				
1W11025000	Tube Expander complete, 25 mm	25.0 - 28.1	30	22	9
1D09025000	Mandrel for Tube Expander, 25 mm				
1G11025000	Cage for Tube Expander, 25 mm				
1R110240S0	Rolls for Tube Expander, 24 + 25 mm				
1W11026000	Tube Expander complete, 26 mm	26.0 - 30.4	35	27	12
1D09026000	Mandrel for Tube Expander, 26 mm				
1G11026000	Cage for Tube Expander, 26 mm				
1R110260S0	Rolls for Tube Expander, 26 mm				
1W11029000	Tube Expander complete, 29 mm	29.0 - 33.9	35	27	12
1D09029000	Mandrel for Tube Expander, 29 mm				
1G11029000	Cage for Tube Expander, 29 mm				
1R110290S0	Rolls for Tube Expander, 29 mm				
1W11032000	Tube Expander complete, 32 mm	32.0 - 36.9	35	27	12
1D09032000	Mandrel for Tube Expander, 32 mm				
1G11032000	Cage for Tube Expander, 32 mm				
1R110320S0	Rolls for Tube Expander, 32 mm				
1W11035000	Tube Expander complete, 35 mm	35.0 - 40.9	35	27	14
1D09035000	Mandrel for Tube Expander, 35 mm				
1G11035000	Cage for Tube Expander, 35 mm				
1R110350S0	Rolls for Tube Expander, 35 + 37 mm				
1W11037000	Tube Expander complete, 37 mm	37.0 - 42.9	35	27	14
1D09037000	Mandrel for Tube Expander, 37 mm				
1G11037000	Cage for Tube Expander, 37 mm				
1R110350S0	Rolls for Tube Expander, 35 + 37 mm				
1W11040000	Tube Expander complete, 40 mm	40.0 - 45.9	35	27	14
1D09040000	Mandrel for Tube Expander, 40 mm				
1G11040000	Cage for Tube Expander, 40 mm				
1R110400S0	Rolls for Tube Expander, 40 mm				
1W11044000	Tube Expander complete, 44 mm	44.0 - 50.9	40	30	16
1D09044000	Mandrel for Tube Expander, 44 mm				
1G11044000	Cage for Tube Expander, 44 mm				
1R110440S0	Rolls for Tube Expander, 44 + 47 mm				

## No. 11 - Combined rolling and flaring Tube Expander

Art.-No.	Article	Expansion (mm)	Length of rolls (mm)	Length of expansion (mm)	Square shaft
1W11047000	Tube Expander complete, 47 mm	47.0 - 53.9	40	30	16
1D09047000	Mandrel for Tube Expander, 47 + 50 mm				
1G11047000	Cage for Tube Expander, 47 mm				
1R110440S0	Rolls for Tube Expander, 44 + 47 mm				
1W11050000	Tube Expander complete, 50 mm	50.0 - 56.9	40	30	16
1D09047000	Mandrel for Tube Expander, 47 + 50 mm				
1G11050000	Cage for Tube Expander, 50 mm				
1R110500S0	Rolls for Tube Expander, 50 mm				
1W11056000	Tube Expander complete, 56 mm	56.0 - 62.9	40	30	16
1D09056000	Mandrel for Tube Expander, 56 mm				
1G11056000	Cage for Tube Expander, 56 mm				
1R110560S0	Rolls for Tube Expander, 56 mm				
1W11060000	Tube Expander complete, 60 mm	60.0 - 69.5	45	35	18
1D09060000	Mandrel for Tube Expander, 60 mm				
1G11060000	Cage for Tube Expander, 60 mm				
1R110600S0	Rolls for Tube Expander, 60 + 63 mm				
1W11063000	Tube Expander complete, 63 mm	63.0 - 72.5	45	35	18
1D09063000	Mandrel for Tube Expander, 63 mm				
1G11063000	Cage for Tube Expander, 63 mm				
1R110600S0	Rolls for Tube Expander, 60 + 63 mm				
1W11068000	Tube Expander complete, 68 mm	68.0 - 77.5	45	35	22
1D09068000	Mandrel for Tube Expander, 68 + 74 mm				
1G11068000	Cage for Tube Expander, 68 mm				
1R110680S0	Rolls for Tube Expander, 68 mm				
1W11074000	Tube Expander complete, 74 mm	74.0 - 83.5	45	35	22
1D09068000	Mandrel for Tube Expander, 68 + 74 mm				
1G11074000	Cage for Tube Expander, 74 mm				
1R110740S0	Rolls for Tube Expander, 74 mm				
1W11080000	Tube Expander complete, 80 mm	80.0 - 91.9	50	40	22
1D09080000	Mandrel for Tube Expander, 80 mm				
1G11080000	Cage for Tube Expander, 80 mm				
1R110800S0	Rolls for Tube Expander, 80 mm				
1W11085000	Tube Expander complete, 85 mm	85.0 - 95.9	50	40	26
1D09085000	Mandrel for Tube Expander, 85 mm				
1G11085000	Cage for Tube Expander, 85 mm				
1R110850S0	Rolls for Tube Expander, 85 mm				
1W11090000	Tube Expander complete, 90 mm	90.0 - 101.9	50	40	26
1D09090000	Mandrel for Tube Expander, 90 mm				
1G11090000	Cage for Tube Expander, 90 mm				
1R110900S0	Rolls for Tube Expander, 90 mm				
1W11098000	Tube Expander complete, 98 mm	98.0 - 109.9	50	40	26
1D09098000	Mandrel for Tube Expander, 98 mm				
1G11098000	Cage for Tube Expander, 98 mm				
1R110980S0	Rolls for Tube Expander, 98 mm				

Other dimensions on request



## No. 16 - Automatic Tube Expander with compression spring

Art.-No.	Article	Expansion (mm)	Length of rolls (mm)	Length of expansion (mm)	Square shaft
1W16010000	Automatic Tube Expander complete, 10 mm	10.0 - 12.0	25	22	8
1W16011000	Automatic Tube Expander complete, 11 mm	11.0 - 13.0	25	22	8
1W16012000	Automatic Tube Expander complete, 12 mm	12.0 - 14.5	25	22	8
1W16013000	Automatic Tube Expander complete, 13 mm	13.0 - 15.5	25	22	8
1W16014000	Automatic Tube Expander complete, 14 mm	14.0 - 17.0	25	22	8
1W16015000	Automatic Tube Expander complete, 15 mm	15.0 - 18.5	25	22	8
1W16016000	Automatic Tube Expander complete, 16 mm	16.0 - 19.5	25	22	8
1W16017000	Automatic Tube Expander complete, 17 mm	17.0 - 21.0	30	27	10
1W16018000	Automatic Tube Expander complete, 18 mm	18.0 - 22.0	30	27	10
1W16020000	Automatic Tube Expander complete, 20 mm	20.0 - 24.5	30	27	10
1W16022000	Automatic Tube Expander complete, 22 mm	22.0 - 27.0	30	27	10
1W16024000	Automatic Tube Expander complete, 24 mm	24.0 - 29.0	30	27	10
1W16026000	Automatic Tube Expander complete, 26 mm	26.0 - 31.0	42	37	12
1W16029000	Automatic Tube Expander complete, 29 mm	29.0 - 34.0	42	37	12
1W16032000	Automatic Tube Expander complete, 32 mm	32.0 - 37.0	42	37	12
1W16035000	Automatic Tube Expander complete, 35 mm	35.0 - 42.0	42	37	14
1W16037500	Automatic Tube Expander complete, 37.5 mm	37.5 - 44.5	42	36	14
1W16040000	Automatic Tube Expander complete, 40 mm	40.0 - 47.0	42	36	14
1W16044000	Automatic Tube Expander complete, 44 mm	44.0 - 52.0	45	39	18
1W16047500	Automatic Tube Expander complete, 47.5 mm	47.5 - 55.5	45	39	18
1W16050000	Automatic Tube Expander complete, 50 mm	50.0 - 58.0	45	39	18
1W16056000	Automatic Tube Expander complete, 56 mm	56.0 - 67.0	45	36	20
1W16060000	Automatic Tube Expander complete, 60 mm	60.0 - 71.0	45	36	20
1W16063000	Automatic Tube Expander complete, 63 mm	63.0 - 74.0	45	36	20
1W16068000	Automatic Tube Expander complete, 68 mm	68.0 - 81.0	50	42	20
1W16074000	Automatic Tube Expander complete, 74 mm	74.0 - 87.0	50	42	20

Other dimensions on request



## No. 18 - Self-feeding Tube Expander with 5 rolls for stainless screwed pipe connections

Art.-No.	Article / * with 3 rolls	Expansion (mm)	Length of rolls (mm)	Length of expansion (mm)	Square shaft
<b>DN</b>					
1W18010000	Tube Expander complete, DN 10 *	9.8 - 11.0	15	12	8
1W18015000	Tube Expander complete, DN 15 *	15.6 - 17.5	15	12	8
1W18020000	Tube Expander complete, DN 20 *	19.8 - 21.8	15	12	8
1W18025000	Tube Expander complete, DN 25	25.0 - 28.0	20	15	12
1W18032000	Tube Expander complete, DN 32	30.3 - 34.0	25	18	12
1W18040000	Tube Expander complete, DN 40	36.0 - 39.7	28	20	14
1W18050000	Tube Expander complete, DN 50	48.0 - 51.7	30	22	14
1W18065000	Tube Expander complete, DN 65	65.0 - 69.9	35	25	16
1W18080000	Tube Expander complete, DN 80	79.0 - 84.9	40	28	22
1W18100000	Tube Expander complete, DN 100	99.0 - 104.5	45	35	22
1W18302800	Tube Expander complete, 30/28	27.0 - 29.9	24	17	12
<b>Inch</b>					
1W18710000	Tube Expander complete, 1"	21.7 - 24.2	24	17	12
1W18711400	Tube Expander complete, 1 1/4"	28.8 - 32.4	25	18	12
1W18711200	Tube Expander complete, 1 1/2"	34.8 - 38.7	28	20	14
1W18720000	Tube Expander complete, 2"	47.0 - 50.8	30	25	14
1W18721200	Tube Expander complete, 2 1/2"	60.0 - 65.0	35	25	16
1W18730000	Tube Expander complete, 3"	71.6 - 77.6	40	30	22
1W18731200	Tube Expander complete, 3 1/2"	84.5 - 90.0	40	28	22
1W18740000	Tube Expander complete, 4"	96.0 - 102.0	45	35	22

Other dimensions on request



## No. 19 - Cutting Device

Art.-No.	Article	Tube o/d (mm)
<b>DN series 1</b>		
1W19012000	Cutting Device, DN 10	12
1W19018000	Cutting Device, DN 15	18
1W19022000	Cutting Device, DN 20	22
1W19028000	Cutting Device, DN 25	28
1W19034000	Cutting Device, DN 32	34
1W19040000	Cutting Device, DN 40	40
1W19052000	Cutting Device, DN 50	52
1W19070000	Cutting Device, DN 65	70
1W19085000	Cutting Device, DN 80	85
1W19104000	Cutting Device, DN 100	104
1W19302800	Cutting Device, 30/28	30
<b>DN series 2</b>		
1W19013000	Cutting Device, 13 mm	13
1W19019000	Cutting Device, 19 mm + 3/4"	19
1W19023000	Cutting Device, 23 mm	23
1W19029000	Cutting Device, 29 mm	29
1W19035000	Cutting Device, 35 mm	35
1W19041000	Cutting Device, 41 mm	41
1W19053000	Cutting Device, 53 mm	53
<b>ISO</b>		
1W19013500	Cutting Device, ISO 13.5 mm	13,5
1W19017200	Cutting Device, ISO 17.2 mm	17,2
1W19021300	Cutting Device, ISO 21.3 mm	21,3
1W19026900	Cutting Device, ISO 26.9 mm	26,9
1W19033700	Cutting Device, ISO 33.7 mm	33,7
1W19042400	Cutting Device, ISO 42.4 mm	42,4
1W19048300	Cutting Device, ISO 48.3 mm	48,3
1W19060300	Cutting Device, ISO 60.3 mm	60,3
1W19730000	Cutting Device, ISO 76.1 mm + 3"	76.1
1W19731200	Cutting Device, ISO 88.9 mm + 3 1/2"	88,9



## No. 19 - Cutting Device

Art.-No.	Article	Tube o/d (mm)
	<b>Inch / SMS</b>	
1W19701200	Cutting Device, 1/2"	1/2" (12.7)
1W19019000	Cutting Device, 3/4" + Gr. 19 mm	3/4" (19.05)
1W19710000	Cutting Device, 19, 1"	1" (25.4)
1W19711400	Cutting Device, 1 1/4"	1 1/4" (31.8)
1W19711200	Cutting Device, 1 1/2"	1 1/2" (38.1)
1W19720000	Cutting Device, 2"	2" (50.8)
1W19721200	Cutting Device, 2 1/2"	2 1/2" (63.5)
1W19730000	Cutting Device, 3" + ISO 76.1 mm	3" (76.2)
1W19731200	Cutting Device, 3 1/2" + ISO 88.9 mm	3 1/2" (88.9)
1W19740000	Cutting Device, 4"	4" (101.6)

Other dimensions on request



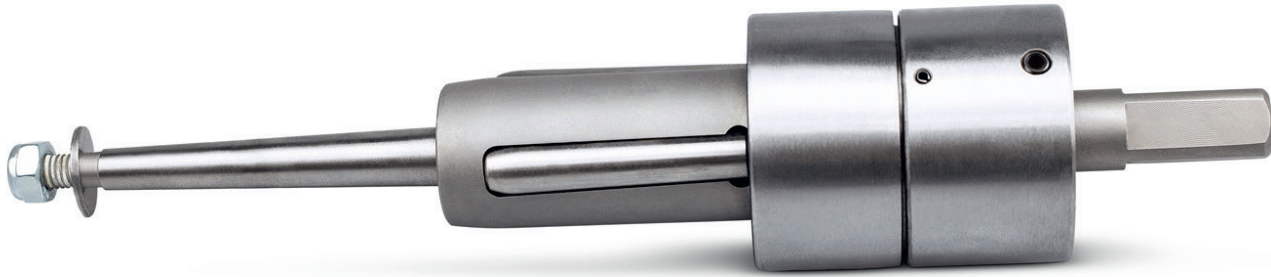
## No. 20 - Cutting Device with Quick Lock System

Art.-No.	Article	Tube o/d (mm)
<b>DN series 1</b>		
1W20012000	Cutting Device with Quick Lock System, DN 10	12
1W20018000	Cutting Device with Quick Lock System, DN 15	18
1W20022000	Cutting Device with Quick Lock System, DN 20	22
1W20028000	Cutting Device with Quick Lock System, DN 25	28
1W20034000	Cutting Device with Quick Lock System, DN 32	34
1W20040000	Cutting Device with Quick Lock System, DN 40	40
1W20052000	Cutting Device with Quick Lock System, DN 50	52
1W20070000	Cutting Device with Quick Lock System, DN 65	70
1W20085000	Cutting Device with Quick Lock System, DN 80	85
1W20104000	Cutting Device with Quick Lock System, DN 100	104
1W20129000	Cutting Device with Quick Lock System, DN 125	129
1W20154000	Cutting Device with Quick Lock System, DN 150	154
1W20204000	Cutting Device with Quick Lock System, DN 200	204
1W20302800	Cutting Device with Quick Lock System, 30/28	30
<b>DN series 2</b>		
1W20013000	Cutting Device with Quick Lock System, 13 mm	13
1W20019000	Cutting Device with Quick Lock System, 19 mm + 3/4"	19
1W20023000	Cutting Device with Quick Lock System, 23 mm	23
1W20029000	Cutting Device with Quick Lock System, 29 mm	29
1W20035000	Cutting Device with Quick Lock System, 35 mm	35
1W20041000	Cutting Device with Quick Lock System, 41 mm	41
1W20053000	Cutting Device with Quick Lock System, 53 mm	53
<b>ISO</b>		
1W20013500	Cutting Device with Quick Lock System, ISO 13.5 mm	13,5
1W20017200	Cutting Device with Quick Lock System, ISO 17.2 mm	17,2
1W20021300	Cutting Device with Quick Lock System, ISO 21.3 mm	21,3
1W20026900	Cutting Device with Quick Lock System, ISO 26.9 mm	26,9
1W20033700	Cutting Device with Quick Lock System, ISO 33.7 mm	33,7
1W20042400	Cutting Device with Quick Lock System, ISO 42.4 mm	42,4
1W20048300	Cutting Device with Quick Lock System, ISO 48.3 mm	48,3
1W20060300	Cutting Device with Quick Lock System, ISO 60.3 mm	60,3
1W20730000	Cutting Device with Quick Lock System, ISO 76.1 mm + 3"	76.1
1W20731200	Cutting Device with Quick Lock System, ISO 88.9 mm + 3 1/2"	88,9
1W20114300	Cutting Device with Quick Lock System, ISO 114.3 mm	114,3
1W20139700	Cutting Device with Quick Lock System, ISO 139.7 mm	139,7
1W20168300	Cutting Device with Quick Lock System, ISO 168.3 mm	168,3

## No 20 - Cutting Device with Quick Lock System

Art.-No.	Article	Tube o/d (mm)
	<b>Inch / SMS</b>	
1W20701400	Cutting Device with Quick Lock System, 1/4"	1/4" (6.35)
1W20703800	Cutting Device with Quick Lock System, 3/8"	3/8" (9.52)
1W20701200	Cutting Device with Quick Lock System, 1/2"	1/2" (12.7)
1W20019000	Cutting Device with Quick Lock System, 3/4" + 19 mm	3/4" (19.05)
1W20710000	Cutting Device with Quick Lock System, 1"	1" (25.4)
1W20711400	Cutting Device with Quick Lock System, 1 1/4"	1 1/4" (31.8)
1W20711200	Cutting Device with Quick Lock System, 1 1/2"	1 1/2" (38.1)
1W20720000	Cutting Device with Quick Lock System, 2"	2" (50.8)
1W20721200	Cutting Device with Quick Lock System, 2 1/2"	2 1/2" (63.5)
1W20730000	Cutting Device with Quick Lock System, 3" + ISO 76.1 mm	3" (76.2)
1W20731200	Cutting Device with Quick Lock System, 3 1/2" + ISO 88.9 mm	3 1/2" (88.9)
1W20740000	Cutting Device with Quick Lock System, 4"	4" (101.6)
1W20750000	Cutting Device with Quick Lock System, 5"	5" (127)
1W20760000	Cutting Device with Quick Lock System, 6"	6" (152.4)

Other dimensions on request



## No. 26 - Self-feeding Tube Expander with adjustable length of expansion

Art.-No.	Article	Expansion (mm)	Length of rolls (mm)	Length of expansion (mm)	Square shaft
1W26004200	Tube Expander complete, 4.2 mm	4.2 - 5.1	13	6 - 10	1/4"
1D26004200	Mandrel for Tube Expander, 4.2, 4.6 + 5.0 mm				
1G26004200	Cage for Tube Expander, 4.2 mm				
1R260042S0	Rolls for Tube Expander, 4.2 mm				
1W26004600	Tube Expander complete, 4.6 mm	4.6 - 5.5	13	6 - 10	1/4"
1D26004200	Mandrel for Tube Expander, 4.2, 4.6 + 5.0 mm				
1G26004600	Cage for Tube Expander, 4.6 mm				
1R260046S0	Rolls for Tube Expander, 4.6 mm				
1W26005000	Tube Expander complete, 5.0 mm	5.0 - 5.9	13	6 - 10	1/4"
1D26004200	Mandrel for Tube Expander, 4.2, 4.6 + 5.0 mm				
1G26005000	Cage for Tube Expander, 5.0 mm				
1R260050S0	Rolls for Tube Expander, 5.0 mm				
1W26005400	Tube Expander complete, 5.4 mm	5.4 - 6.3	25	13 - 22	1/4"
1D26005400	Mandrel for Tube Expander, 5.4, 5.8 + 6.2 mm				
1G26005400	Cage for Tube Expander, 5.4 mm				
1R260054S0	Rolls for Tube Expander, 5.4 mm				
1W26005800	Tube Expander complete, 5.8 mm	5.8 - 6.7	25	13 - 22	1/4"
1D26005400	Mandrel for Tube Expander, 5.4, 5.8 + 6.2 mm				
1G26005800	Cage for Tube Expander, 5.8 mm				
1R260058S0	Rolls for Tube Expander, 5.8 mm				
1W26006200	Tube Expander complete, 6.2 mm	6.2 - 7.1	25	13 - 22	1/4"
1D26005400	Mandrel for Tube Expander, 5.4, 5.8 + 6.2 mm				
1G26006200	Cage for Tube Expander, 6.2 mm				
1R260062S0	Rolls for Tube Expander, 6.2 + 6.6 mm				
1W26006600	Tube Expander complete, 6.6 mm	6.6 - 7.6	25	13 - 22	1/4"
1D26006600	Mandrel for Tube Expander, 6.6, 7.0 + 7.4 mm				
1G26006600	Cage for Tube Expander, 6.6 mm				
1R260062S0	Rolls for Tube Expander, 6.2 + 6.6 mm				
1W26007000	Tube Expander complete, 7.0 mm	7.0 - 8.1	25	13 - 22	1/4"
1D26006600	Mandrel for Tube Expander, 6.6, 7.0 + 7.4 mm				
1G26007000	Cage for Tube Expander, 7.0 mm				
1R260070S0	Rolls for Tube Expander, 7.0 mm				

## No. 26 - Self-feeding Tube Expander with adjustable length of expansion

Art.-No.	Article	Expansion (mm)	Length of rolls (mm)	Length of expansion (mm)	Square shaft
1W26007400	Tube Expander complete, 7.4 mm	7.4 - 8.4	25	13 - 22	1/4"
1D26006600	Mandrel for Tube Expander, 6.6, 7.0 + 7.4 mm				
1G26007400	Cage for Tube Expander, 7.4 mm				
1R260074S0	Rolls for Tube Expander, 7.4 + 7.8 mm				
1W26007800	Tube Expander complete, 7.8 mm	7.8 - 8.9	25	13 - 22	1/4"
1D26007800	Mandrel for Tube Expander, 7.8, 8.2, 8.6 + 9.0 mm				
1G26007800	Cage for Tube Expander, 7.8 mm				
1R260074S0	Rolls for Tube Expander, 7.4 + 7.8 mm				
1W26008200	Tube Expander complete, 8.2 mm	8.2 - 9.3	25	13 - 22	1/4"
1D26007800	Mandrel for Tube Expander, 7.8, 8.2, 8.6 + 9.0 mm				
1G26008200	Cage for Tube Expander, 8.2 mm				
1R260082S0	Rolls for Tube Expander, 8.2 mm				
1W26008600	Tube Expander complete, 8.6 mm	8.6 - 9.7	25	13 - 22	1/4"
1D26007800	Mandrel for Tube Expander, 7.8, 8.2, 8.6 + 9.0 mm				
1G26008600	Cage for Tube Expander, 8.6 mm				
1R260086S0	Rolls for Tube Expander, 8.6 mm				
1W26009000	Tube Expander complete, 9.0 mm	9.0 - 10.2	25	13 - 22	1/4"
1D26007800	Mandrel for Tube Expander, 7.8, 8.2, 8.6 + 9.0 mm				
1G26009000	Cage for Tube Expander, 9.0 mm				
1R260090S0	Rolls for Tube Expander, 9.0 mm				
1W26009600	Tube Expander complete, 9.6 mm	9.6 - 11.2	28	12 - 25	9
1D26009600	Mandrel for Tube Expander, 9.6 mm				
1G26009600	Cage for Tube Expander, 9.6 mm				
1R260096S0	Rolls for Tube Expander, 9.6 mm				
1W26010600	Tube Expander complete, 10.6 mm	10.6 - 12.0	28	12 - 25	9
1D26010600	Mandrel for Tube Expander, 10.6 mm				
1G26010600	Cage for Tube Expander, 10.6 mm				
1R260106S0	Rolls for Tube Expander, 10.6 mm				
1W26011500	Tube Expander complete, 11.5 mm	11.5 - 13.4	28	12 - 25	9
1D26011500	Mandrel for Tube Expander, 11.5 mm				
1G26011500	Cage for Tube Expander, 11.5 mm				
1R260115S0	Rolls for Tube Expander, 11.5 mm				
1W26012500	Tube Expander complete, 12.5 mm	12.5 - 14.3	36	15 - 32	9
1D26012500	Mandrel for Tube Expander, 12.5 + 13.5 mm				
1G26012500	Cage for Tube Expander, 12.5 mm				
1R260125S0	Rolls for Tube Expander, 12.5 mm				
1W26013500	Tube Expander complete, 13.5 mm	13.5 - 15.3	36	15 - 32	9
1D26012500	Mandrel for Tube Expander, 12.5 + 13.5 mm				
1G26013500	Cage for Tube Expander, 13.5 mm				
1R260135S0	Rolls for Tube Expander, 13.5 mm				
1W26014500	Tube Expander complete, 14.5 mm	14.5 - 16.9	45	20 - 40	9
1D26014500	Mandrel for Tube Expander, 14.5 + 15.5 mm				
1G26014500	Cage for Tube Expander, 14.5 mm				
1R260145S0	Rolls for Tube Expander, 14.5 mm				

## No. 26 - Self-feeding Tube Expander with adjustable length of expansion

Art.-No.	Article	Expansion (mm)	Length of rolls (mm)	Length of expansion (mm)	Square shaft
1W26015500	Tube Expander complete, 15.5 mm	15.5 - 17.9	45	20 - 40	9
1D26014500	Mandrel for Tube Expander, 14.5 + 15.5 mm				
1G26015500	Cage for Tube Expander, 15.5 mm				
1R260155S0	Rolls for Tube Expander, 15.5 mm				
1W26016500	Tube Expander complete, 16.5 mm	16.5 - 19.4	50	20 - 45	9
1D26016500	Mandrel for Tube Expander, 16.5, 17.3 + 18.3 mm				
1G26016500	Cage for Tube Expander, 16.5 mm				
1R260165S0	Rolls for Tube Expander, 16.5 mm				
1W26017300	Tube Expander complete, 17.3 mm	17.3 - 20.0	50	20 - 45	9
1D26016500	Mandrel for Tube Expander, 16.5, 17.3 + 18.3 mm				
1G26017300	Cage for Tube Expander, 17.3 mm				
1R260173S0	Rolls for Tube Expander, 17.3 mm				
1W26018300	Tube Expander complete, 18.3 mm	18.3 - 21.0	50	20 - 45	9
1D26016500	Mandrel for Tube Expander, 16.5, 17.3 + 18.3 mm				
1G26018300	Cage for Tube Expander, 18.3 mm				
1R260183S0	Rolls for Tube Expander, 18.3 + 19 mm				
1W26019000	Tube Expander complete, 19 mm	19.0 - 21.5	50	20 - 45	9
1D26019000	Mandrel for Tube Expander, 19 + 20 mm				
1G26019000	Cage for Tube Expander, 19 mm				
1R260183S0	Rolls for Tube Expander, 18.3 + 19 mm				
1W26020000	Tube Expander complete, 20 mm	20.0 - 22.7	50	20 - 45	9
1D26019000	Mandrel for Tube Expander, 19 + 20 mm				
1G26020000	Cage for Tube Expander, 20 mm				
1R260200S0	Rolls for Tube Expander, 20 mm				
1W26021000	Tube Expander complete, 21 mm	21.0 - 24.6	50	20 - 45	12
1D26021000	Mandrel for Tube Expander, 21, 22 + 23 mm				
1G26021000	Cage for Tube Expander, 21 mm				
1R260210S0	Rolls for Tube Expander, 21 mm				
1W26022000	Tube Expander complete, 22 mm	22.0 - 25.6	50	20 - 45	12
1D26021000	Mandrel for Tube Expander, 21, 22 + 23 mm				
1G26022000	Cage for Tube Expander, 22 mm				
1R260220S0	Rolls for Tube Expander, 22 mm				
1W26023000	Tube Expander complete, 23 mm	23.0 - 26.4	50	20 - 45	12
1D26021000	Mandrel for Tube Expander, 21, 22 + 23 mm				
1G26023000	Cage for Tube Expander, 23 mm				
1R260230S0	Rolls for Tube Expander, 23 mm				
1W26024000	Tube Expander complete, 24 mm	24.0 - 28.0	55	25 - 50	14
1D26024000	Mandrel for Tube Expander, 24, 26 + 28 mm				
1G26024000	Cage for Tube Expander, 24 mm				
1R260240S0	Rolls for Tube Expander, 24 mm				
1W26026000	Tube Expander complete, 26 mm	26.0 - 29.8	55	25 - 50	14
1D26024000	Mandrel for Tube Expander, 24, 26 + 28 mm				
1G26026000	Cage for Tube Expander, 26 mm				
1R260260S0	Rolls for Tube Expander, 26 mm				

## No. 26 - Self-feeding Tube Expander with adjustable length of expansion

Art.-No.	Article	Expansion (mm)	Length of rolls (mm)	Length of expansion (mm)	Square shaft
1W26028000	Tube Expander complete, 28 mm	28.0 - 31.8	55	25 - 50	14
1D26024000	Mandrel for Tube Expander, 24, 26 + 28 mm				
1G26028000	Cage for Tube Expander, 28 mm				
1R260280S0	Rolls for Tube Expander, 28 + 30 mm				
1W26030000	Tube Expander complete, 30 mm	30.0 - 34.0	55	25 - 50	14
1D26030000	Mandrel for Tube Expander, 30, 32 + 34 mm				
1G26030000	Cage for Tube Expander, 30 mm				
1R260280S0	Rolls for Tube Expander, 28 + 30 mm				
1W26032000	Tube Expander complete, 32 mm	32.0 - 36.0	55	25 - 50	14
1D26030000	Mandrel for Tube Expander, 30, 32 + 34 mm				
1G26032000	Cage for Tube Expander, 32 mm				
1R260320S0	Rolls for Tube Expander, 32 mm				
1W26034000	Tube Expander complete, 34 mm	34.0 - 37.8	55	25 - 50	14
1D26030000	Mandrel for Tube Expander, 30, 32 + 34 mm				
1G26034000	Cage for Tube Expander, 34 mm				
1R260340S0	Rolls for Tube Expander, 34 mm				
1W26036000	Tube Expander complete, 36 mm	36.0 - 40.7	62	25 - 55	16
1D26036000	Mandrel for Tube Expander, 36, 38 , 40 + 42 mm				
1G26036000	Cage for Tube Expander, 36 mm				
1R260360S0	Rolls for Tube Expander, 36 mm				
1W26038000	Tube Expander complete, 38 mm	38.0 - 42.7	62	25 - 55	16
1D26036000	Mandrel for Tube Expander, 36, 38 , 40 + 42 mm				
1G26038000	Cage for Tube Expander, 38 mm				
1R260380S0	Rolls for Tube Expander, 38 mm				
1W26040000	Tube Expander complete, 40 mm	40.0 - 44.7	62	25 - 55	16
1D26036000	Mandrel for Tube Expander, 36, 38 , 40 + 42 mm				
1G26040000	Cage for Tube Expander, 40 mm				
1R260400S0	Rolls for Tube Expander, 40 mm				
1W26042000	Tube Expander complete, 42 mm	42.0 - 46.7	62	25 - 55	16
1D26036000	Mandrel for Tube Expander, 36, 38 , 40 + 42 mm				
1G26042000	Cage for Tube Expander, 42 mm				
1R260420S0	Rolls for Tube Expander, 42 mm				
1W26044000	Tube Expander complete, 44 mm	44.0 - 50.0	68	25 - 60	18
1D26044000	Mandrel for Tube Expander, 44 + 46 mm				
1G26044000	Cage for Tube Expander, 44 mm				
1R260440S0	Rolls for Tube Expander, 44 mm				
1W26046000	Tube Expander complete, 46 mm	46.0 - 52.0	68	25 - 60	18
1D26044000	Mandrel for Tube Expander, 44 + 46 mm				
1G26046000	Cage for Tube Expander, 46 mm				
1R260460S0	Rolls for Tube Expander, 46 mm				
1W26048000	Tube Expander complete, 48 mm	48.0 - 54.9	68	25 - 60	18
1D26048000	Mandrel for Tube Expander, 48, 50 + 52 mm				
1G26048000	Cage for Tube Expander, 48 mm				
1R260480S0	Rolls for Tube Expander, 48 mm				



## No. 26 - Self-feeding Tube Expander with adjustable length of expansion

Art.-No.	Article	Expansion (mm)	Length of rolls (mm)	Length of expansion (mm)	Square shaft
1W26050000	Tube Expander complete, 50 mm	50.0 - 56.9	68	25 - 60	18
1D26048000	Mandrel for Tube Expander, 48, 50 + 52 mm				
1G26050000	Cage for Tube Expander, 50 mm				
1R260500S0	Rolls for Tube Expander, 50 mm				
1W26052000	Tube Expander complete, 52 mm	52.0 - 58.9	68	25 - 60	18
1D26048000	Mandrel for Tube Expander, 48, 50 + 52 mm				
1G26052000	Cage for Tube Expander, 52 mm				
1R260520S0	Rolls for Tube Expander, 52 + 54 mm				
1W26054000	Tube Expander complete, 54 mm	54.0 - 60.9	68	25 - 60	18
1D26054000	Mandrel for Tube Expander, 54, 56 + 58 mm				
1G26054000	Cage for Tube Expander, 54 mm				
1R260520S0	Rolls for Tube Expander, 52 + 54 mm				
1W26056000	Tube Expander complete, 56 mm	56.0 - 62.9	68	25 - 60	18
1D26054000	Mandrel for Tube Expander, 54, 56 + 58 mm				
1G26056000	Cage for Tube Expander, 56 mm				
1R260560S0	Rolls for Tube Expander, 56 mm				
1W26058000	Tube Expander complete, 58 mm	58.0 - 64.9	68	25 - 60	18
1D26054000	Mandrel for Tube Expander, 54, 56 + 58 mm				
1G26058000	Cage for Tube Expander, 58 mm				
1R260580S0	Rolls for Tube Expander, 58 + 60 mm				
1W26060000	Tube Expander complete, 60 mm	60.0 - 67.9	68	25 - 60	22
1D26060000	Mandrel for Tube Expander, 60, 62 + 64 mm				
1G26060000	Cage for Tube Expander, 60 mm				
1R260580S0	Rolls for Tube Expander, 58 + 60 mm				
1W26062000	Tube Expander complete, 62 mm	62.0 - 69.9	68	25 - 60	22
1D26060000	Mandrel for Tube Expander, 60, 62 + 64 mm				
1G26062000	Cage for Tube Expander, 62 mm				
1R260620S0	Rolls for Tube Expander, 62 mm				
1W26064000	Tube Expander complete, 64 mm	64.0 - 71.9	68	25 - 60	22
1D26060000	Mandrel for Tube Expander, 60, 62 + 64 mm				
1G26064000	Cage for Tube Expander, 64 mm				
1R260640S0	Rolls for Tube Expander, 64 mm				

Other dimensions on request



## No. 28 - Free Wheel Wrench

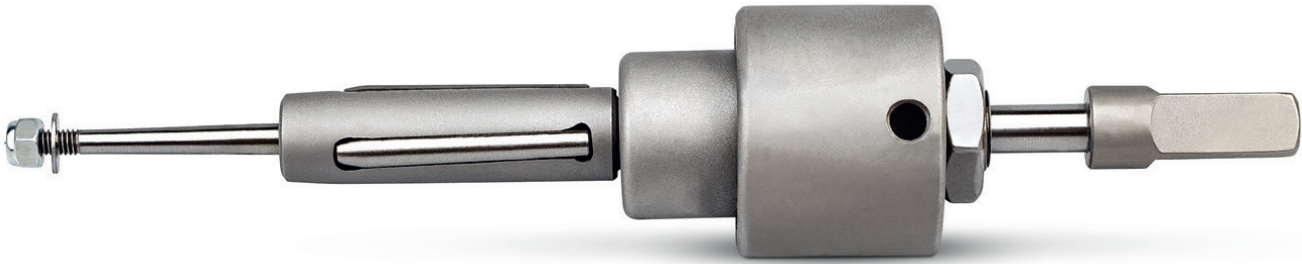
Art.-No.	Article
1Z28VK0800	Free Wheel Wrench, square shaft 8 mm
1Z28VK1200	Free Wheel Wrench, square shaft 12 mm
1Z28VK1400	Free Wheel Wrench, square shaft 14 mm
1Z28VK1600	Free Wheel Wrench, square shaft 16 mm
1Z28VK2200	Free Wheel Wrench, square shaft 22 mm



## No. 29 - Clamping Block for fittings

Art.-No.	Article	Tube o/d (mm)
<b>DN</b>		
1W29010000	Spannvorrichtung, DN 10	12
1W29015000	Spannvorrichtung, DN 15	18
1W29020000	Spannvorrichtung, DN 20	22
1W29025000	Spannvorrichtung, DN 25	28
1W29032000	Spannvorrichtung, DN 32	34
1W29040000	Spannvorrichtung, DN 40	40
1W29050000	Spannvorrichtung, DN 50	52
1W29065000	Spannvorrichtung, DN 65	70
1W29080000	Spannvorrichtung, DN 80	85
1W29100000	Spannvorrichtung, DN 100	104
<b>SMS</b>		
1W29525000	Spannvorrichtung, SMS 25	1" (25.4)
1W29532000	Spannvorrichtung, SMS 32	1 1/4" (31.8)
1W29538000	Spannvorrichtung, SMS 38	1 1/2" (38.1)
1W29551000	Spannvorrichtung, SMS 51	2" (50.8)
1W29563500	Spannvorrichtung, SMS 63.5	2 1/2" (63.5)
1W29576000	Spannvorrichtung, SMS 76	3" (76.2)

Other dimensions on request



## No. 46 - Self-feeding Tube Expander with adjustable collar

Art.-No.	Article	Expansion (mm)	Length of rolls (mm)	Length of expansion (mm)	Reach (mm)	Square shaft
<b>Rolls with 1 parabola</b>						
1W46008801	Tube Expander complete, 8.8 mm	8.8 - 10.0	40	15 - 35	70	3/8"
1D46008800	Mandrel for Tube Expander, 8.8 mm					
1G46008800	Cage for Tube Expander, 8.8 mm					
1R460088S1	Rolls for Tube Expander, 8.8 mm					
1W46009001	Tube Expander complete, 9 mm	9.0 - 10.2	40	15 - 35	70	3/8"
1D46009000	Mandrel for Tube Expander, 9 + 9.6 mm					
1G46009000	Cage for Tube Expander, 9 mm					
1R460090S1	Rolls for Tube Expander, 9 mm					
1W46009601	Tube Expander complete, 9.6 mm	9.6 - 10.8	40	15 - 35	70	3/8"
1D46009000	Mandrel for Tube Expander, 9 + 9.6 mm					
1G46009600	Cage for Tube Expander, 9.6 mm					
1R460096S1	Rolls for Tube Expander, 9.6 + 10 mm					
1W46010001	Tube Expander complete, 10 mm	10.0 - 11.3	40	15 - 35	70	3/8"
1D46010000	Mandrel for Tube Expander, 10 mm					
1G46010000	Cage for Tube Expander, 10 mm					
1R460096S1	Rolls for Tube Expander, 9.6 + 10 mm					
1W46010601	Tube Expander complete, 10.6 mm	10.6 - 11.8	40	15 - 35	70	3/8"
1D46010600	Mandrel for Tube Expander, 10.6 + 11.4 mm					
1G46010600	Cage for Tube Expander, 10.6 mm					
1R460106S1	Rolls for Tube Expander, 10.6 mm					
1W46011401	Tube Expander complete, 11.4 mm	11.4 - 12.7	40	15 - 35	70	3/8"
1D46010600	Mandrel for Tube Expander, 10.6 + 11.4 mm					
1G46011400	Cage for Tube Expander, 11.4 mm					
1R460114S1	Rolls for Tube Expander, 11.4 mm					
1W46012001	Tube Expander complete, 12 mm	12.0 - 13.8	40	15 - 35	70	3/8"
1D46012000	Mandrel for Tube Expander, 12 mm					
1G46012000	Cage for Tube Expander, 12 mm					
1R460120S1	Rolls for Tube Expander, 12 + 12.6 mm					
1W46012601	Tube Expander complete, 12.6 mm	12.6 - 14.6	40	15 - 35	70	3/8"
1D46012600	Mandrel for Tube Expander, 12.6, 13 + 13.8 mm					
1G46012600	Cage for Tube Expander, 12.6 mm					
1R460120S1	Rolls for Tube Expander, 12 + 12.6 mm					

## No. 46 - Self-feeding Tube Expander with adjustable collar

Art.-No.	Article	Expansion (mm)	Length of rolls (mm)	Length of expansion (mm)	Reach (mm)	Square shaft
1W46013001	Tube Expander complete, 13 mm	13.0 - 15.0	40	15 - 35	70	3/8"
1D46012600	Mandrel for Tube Expander, 12.6, 13 + 13.8 mm					
1G46013000	Cage for Tube Expander, 13 mm					
1R460130S1	Rolls for Tube Expander, 13 mm					
1W46013801	Tube Expander complete, 13.8 mm	13.8 - 15.9	60	35 - 55	70	3/8"
1D46012600	Mandrel for Tube Expander, 12.6, 13 + 13.8 mm					
1G46013800	Cage for Tube Expander, 13.8 mm					
1R460138S1	Rolls for Tube Expander, 13.8 + 14.5 mm					
1W46014501	Tube Expander complete, 14.5 mm	14.5 - 16.6	60	35 - 55	70	3/8"
1D46014500	Mandrel for Tube Expander, 14.5, 15 + 15.5					
1G46014500	Cage for Tube Expander, 14.5 mm					
1R460138S1	Rolls for Tube Expander, 13.8 + 14.5 mm					
1W46015001	Tube Expander complete, 15 mm	15.0 - 17.3	60	35 - 55	70	3/8"
1D46014500	Mandrel for Tube Expander, 14.5, 15 + 15.5					
1G46015000	Cage for Tube Expander, 15 mm					
1R460150S1	Rolls for Tube Expander, 15 mm					
1W46015501	Tube Expander complete, 15.5 mm	15.5 - 17.7	60	35 - 55	70	3/8"
1D46014500	Mandrel for Tube Expander, 14.5, 15 + 15.5					
1G46015500	Cage for Tube Expander, 15.5 mm					
1R460155S1	Rolls for Tube Expander, 15.5 mm					
1W46016001	Tube Expander complete, 16 mm	16.0 - 18.4	60	35 - 55	70	3/8"
1D46016000	Mandrel for Tube Expander, 16 mm					
1G46016000	Cage for Tube Expander, 16 mm					
1R460160S1	Rolls for Tube Expander, 16 + 16.5 mm					
1W46016501	Tube Expander complete, 16.5 mm	16.5 - 18.6	60	35 - 55	70	3/8"
1D46016500	Mandrel for Tube Expander, 16.5, 17 + 17.5 mm					
1G46016500	Cage for Tube Expander, 16.5 mm					
1R460160S1	Rolls for Tube Expander, 16 + 16.5 mm					
1W46017001	Tube Expander complete, 17 mm	17.0 - 19.0	60	35 - 55	70	3/8"
1D46016500	Mandrel for Tube Expander, 16.5, 17 + 17.5 mm					
1G46017000	Cage for Tube Expander, 17 mm					
1R460170S1	Rolls for Tube Expander, 17 mm					
1W46017501	Tube Expander complete, 17.5 mm	17.5 - 19.7	60	35 - 55	70	3/8"
1D46016500	Mandrel for Tube Expander, 16.5, 17 + 17.5 mm					
1G46017500	Cage for Tube Expander, 17.5 mm					
1R460175S1	Rolls for Tube Expander, 17.5 mm					
1W46018401	Tube Expander complete, 18.4 mm	18.4 - 21.2	60	35 - 55	70	3/8"
1D46018400	Mandrel for Tube Expander, 18.4 mm					
1G46018400	Cage for Tube Expander, 18.4 mm					
1R460184S1	Rolls for Tube Expander, 18.4, 19 + 19.5 mm					
1W46019001	Tube Expander complete, 19 mm	19.0 - 21.5	60	35 - 55	70	3/8"
1D46019000	Mandrel for Tube Expander, 19 mm					
1G46019000	Cage for Tube Expander, 19 mm					
1R460184S1	Rolls for Tube Expander, 18.4, 19 + 19.5 mm					

## No. 46 - Self-feeding Tube Expander with adjustable collar

Art.-No.	Article	Expansion (mm)	Length of rolls (mm)	Length of expansion (mm)	Reach (mm)	Square shaft
1W46019501	Tube Expander complete, 19.5 mm	19.5 - 21.8	60	35 - 55	70	3/8"
1D46019500	Mandrel for Tube Expander, 19.5 mm					
1G46019500	Cage for Tube Expander, 19.5 mm					
1R460184S1	Rolls for Tube Expander, 18.4, 19 + 19.5 mm					
1W46020001	Tube Expander complete, 20 mm	20.0 - 23.0	60	35 - 55	70	3/8"
1D46020000	Mandrel for Tube Expander, 20 mm					
1G46020000	Cage for Tube Expander, 20 mm					
1R460200S1	Rolls for Tube Expander, 20, 20.5 + 21 mm					
1W46020501	Tube Expander complete, 20.5 mm	20.5 - 23.6	60	35 - 55	70	3/8"
1D46020500	Mandrel for Tube Expander, 20.5 mm					
1G46020500	Cage for Tube Expander, 20.5 mm					
1R460200S1	Rolls for Tube Expander, 20, 20.5 + 21 mm					
1W46021001	Tube Expander complete, 21 mm	21.0 - 24.0	60	35 - 55	70	3/8"
1D46021000	Mandrel for Tube Expander, 21 + 22 mm					
1G46021000	Cage for Tube Expander, 21 mm					
1R460200S1	Rolls for Tube Expander, 20, 20.5 + 21 mm					
1W46022001	Tube Expander complete, 22 mm	22.0 - 25.0	60	35 - 55	70	3/8"
1D46021000	Mandrel for Tube Expander, 21 + 22 mm					
1G46022000	Cage for Tube Expander, 22 mm					
1R460220S1	Rolls for Tube Expander, 22 mm					

### Rolls with 2 parabolas

1W46008800	Tube Expander complete, 8.8 mm	8.8 - 10.0	40	15 - 30	70	3/8"
1D46008800	Mandrel for Tube Expander, 8.8 mm					
1G46008800	Cage for Tube Expander, 8.8 mm					
1R470088S0	, 8.8 mm					
1W46009000	Tube Expander complete, 9 mm	9.0 - 10.2	40	15 - 30	70	3/8"
1D46009000	Mandrel for Tube Expander, 9 + 9.6 mm					
1G46009000	Cage for Tube Expander, 9 mm					
1R470090S0	Rolls for Tube Expander, 8 + 9 mm					
1W46009600	Tube Expander complete, 9.6 mm	9.6 - 10.8	40	15 - 30	70	3/8"
1D46009000	Mandrel for Tube Expander, 9 + 9.6 mm					
1G46009600	Cage for Tube Expander, 9.6 mm					
1R470096S0	Rolls for Tube Expander, 9.6 + 10 mm					
1W46010000	Tube Expander complete, 10 mm	10.0 - 11.3	40	15 - 30	70	3/8"
1D46010000	Mandrel for Tube Expander, 10 mm					
1G46010000	Cage for Tube Expander, 10 mm					
1R470096S0	Rolls for Tube Expander, 9.6 + 10 mm					
1W46010600	Tube Expander complete, 10.6 mm	10.6 - 11.8	40	15 - 30	70	3/8"
1D46010600	Mandrel for Tube Expander, 10.6 + 11.4 mm					
1G46010600	Cage for Tube Expander, 10.6 mm					
1R470106S0	Rolls for Tube Expander, 10.6 mm					

## No. 46 - Self-feeding Tube Expander with adjustable collar

Art.-No.	Article	Expansion (mm)	Length of rolls (mm)	Length of expansion (mm)	Reach (mm)	Square shaft
1W46011400	Tube Expander complete, 11.4 mm	11.4 - 12.7	40	15 - 30	70	3/8"
1D46010600	Mandrel for Tube Expander, 10.6 + 11.4 mm					
1G46011400	Cage for Tube Expander, 11.4 mm					
1R47011450	Rolls for Tube Expander, 11.4 mm					
1W46012000	Tube Expander complete, 12 mm	12.0 - 13.8	40	15 - 30	70	3/8"
1D46012000	Mandrel for Tube Expander, 12 mm					
1G46012000	Cage for Tube Expander, 12 mm					
1R47012050	Rolls for Tube Expander, 12 + 12.6 mm					
1W46012600	Tube Expander complete, 12.6 mm	12.6 - 14.6	40	15 - 30	70	3/8"
1D46012600	Mandrel for Tube Expander, 12.6, 13 + 13.8 mm					
1G46012600	Cage for Tube Expander, 12.6 mm					
1R47012050	Rolls for Tube Expander, 12 + 12.6 mm					
1W46013000	Tube Expander complete, 13 mm	13.0 - 15.0	40	15 - 30	70	3/8"
1D46012600	Mandrel for Tube Expander, 12.6, 13 + 13.8 mm					
1G46013000	Cage for Tube Expander, 13 mm					
1R47013050	Rolls for Tube Expander, 13 mm					
1W46013800	Tube Expander complete, 13.8 mm	13.8 - 15.9	60	35 - 50	70	3/8"
1D46012600	Mandrel for Tube Expander, 12.6, 13 + 13.8 mm					
1G46013800	Cage for Tube Expander, 13.8 mm					
1R47013851	Rolls for Tube Expander, 13.8 + 14.5 mm					
1W46014500	Tube Expander complete, 14.5 mm	14.5 - 16.6	60	35 - 50	70	3/8"
1D46014500	Mandrel for Tube Expander, 14.5, 15 + 15.5					
1G46014500	Cage for Tube Expander, 14.5 mm					
1R47013851	Rolls for Tube Expander, 13.8 + 14.5 mm					
1W46015000	Tube Expander complete, 15 mm	15.0 - 17.3	60	35 - 50	70	3/8"
1D46014500	Mandrel for Tube Expander, 14.5, 15 + 15.5					
1G46015000	Cage for Tube Expander, 15 mm					
1R47015051	Rolls for Tube Expander, 15 mm					
1W46015500	Tube Expander complete, 15.5 mm	15.5 - 17.7	60	35 - 50	70	3/8"
1D46014500	Mandrel for Tube Expander, 14.5, 15 + 15.5					
1G46015500	Cage for Tube Expander, 15.5 mm					
1R47015551	Rolls for Tube Expander, 15.5 mm					
1W46016000	Tube Expander complete, 16 mm	16.0 - 18.4	60	35 - 50	70	3/8"
1D46016000	Mandrel for Tube Expander, 16 mm					
1G46016000	Cage for Tube Expander, 16 mm					
1R47016051	Rolls for Tube Expander, 16 + 16.5 mm					
1W46016500	Tube Expander complete, 16.5 mm	16.5 - 18.6	60	35 - 50	70	3/8"
1D46016500	Mandrel for Tube Expander, 16.5, 17 + 17.5 mm					
1G46016500	Cage for Tube Expander, 16.5 mm					
1R47016051	Rolls for Tube Expander, 16 + 16.5 mm					
1W46017000	Tube Expander complete, 17 mm	17.0 - 19.0	60	35 - 50	70	3/8"
1D46016500	Mandrel for Tube Expander, 16.5, 17 + 17.5 mm					
1G46017000	Cage for Tube Expander, 17 mm					
1R47017051	Rolls for Tube Expander, 17 mm					



## No. 46 - Self-feeding Tube Expander with adjustable collar

Art.-No.	Article	Expansion (mm)	Length of rolls (mm)	Length of expansion (mm)	Reach (mm)	Square shaft
1W46017500	Tube Expander complete, 17.5 mm	17.5 - 19.7	60	35 - 50	70	3/8"
1D46016500	Mandrel for Tube Expander, 16.5, 17 + 17.5 mm					
1G46017500	Cage for Tube Expander, 17.5 mm					
1R470175S1	Rolls for Tube Expander, 17.5 mm					
1W46018400	Tube Expander complete, 18.4 mm	18.4 - 21.2	60	35 - 50	70	3/8"
1D46018400	Mandrel for Tube Expander, 18.4 mm					
1G46018400	Cage for Tube Expander, 18.4 mm					
1R470184S1	Rolls for Tube Expander, 18.4, 19 + 19.5 mm					
1W46019000	Tube Expander complete, 19 mm	19.0 - 21.5	60	35 - 50	70	3/8"
1D46019000	Mandrel for Tube Expander, 19 mm					
1G46019000	Cage for Tube Expander, 19 mm					
1R470184S1	Rolls for Tube Expander, 18.4, 19 + 19.5 mm					
1W46019500	Tube Expander complete, 19.5 mm	19.5 - 21.8	60	35 - 50	70	3/8"
1D46019500	Mandrel for Tube Expander, 19.5 mm					
1G46019500	Cage for Tube Expander, 19.5 mm					
1R470184S1	Rolls for Tube Expander, 18.4, 19 + 19.5 mm					
1W46020000	Tube Expander complete, 20 mm	20.0 - 23.0	60	35 - 50	70	3/8"
1D46020000	Mandrel for Tube Expander, 20 mm					
1G46020000	Cage for Tube Expander, 20 mm					
1R470200S1	Rolls for Tube Expander, 20, 20.5 + 21 mm					
1W46020500	Tube Expander complete, 20.5 mm	20.5 - 23.6	60	35 - 50	70	3/8"
1D46020500	Mandrel for Tube Expander, 20.5 mm					
1G46020500	Cage for Tube Expander, 20.5 mm					
1R470200S1	Rolls for Tube Expander, 20, 20.5 + 21 mm					
1W46021000	Tube Expander complete, 21 mm	21.0 - 24.0	60	35 - 50	70	3/8"
1D46021000	Mandrel for Tube Expander, 21 + 22 mm					
1G46021000	Cage for Tube Expander, 21 mm					
1R470200S1	Rolls for Tube Expander, 20, 20.5 + 21 mm					
1W46022000	Tube Expander complete, 22 mm	22.0 - 25.0	60	35 - 50	70	3/8"
1D46021000	Mandrel for Tube Expander, 21 + 22 mm					
1G46022000	Cage for Tube Expander, 22 mm					
1R470220S1	Rolls for Tube Expander, 22 mm					

Other dimensions on request



## No. 47 - Self-feeding Tube Expander with long reach

Art.-No.	Article	Expansion (mm)	Length of rolls (mm)	Length of expansion	Reach (mm)	Square shaft
<b>Rolls with 2 parabolas / length of rolls 40 mm</b>						
1W47008800	Tube Expander complete, 8.8 mm	8.8 - 10.0	40	30	100	3/8"
1D47008800	Mandrel for Tube Expander, 8.8 mm					
1G47008800	Cage for Tube Expander, 8.8 mm					
1R470088S0	Rolls for Tube Expander, 8.8 mm					
1W47009000	Tube Expander complete, 9 mm	9.0 - 10.2	40	30	100	3/8"
1D47009000	Mandrel for Tube Expander, 9 + 9.6 mm					
1G47009000	Cage for Tube Expander, 9 mm					
1R470090S0	Rolls for Tube Expander, 8 + 9 mm					
1W47009600	Tube Expander complete, 9.6 mm	9.6 - 10.8	40	30	100	3/8"
1D47009000	Mandrel for Tube Expander, 9 + 9.6 mm					
1G47009600	Cage for Tube Expander, 9.6 mm					
1R470096S0	Rolls for Tube Expander, 9.6 + 10 mm					
1W47010000	Tube Expander complete, 10 mm	10.0 - 11.3	40	30	100	3/8"
1D47010000	Mandrel for Tube Expander, 10 mm					
1G47010000	Cage for Tube Expander, 10 mm					
1R470096S0	Rolls for Tube Expander, 9.6 + 10 mm					
1W47010600	Tube Expander complete, 10.6 mm	10.6 - 11.8	40	30	100	3/8"
1D47010600	Mandrel for Tube Expander, 10.6 + 11.4 mm					
1G47010600	Cage for Tube Expander, 10.6 mm					
1R470106S0	Rolls for Tube Expander, 10.6 mm					
1W47011400	Tube Expander complete, 11.4 mm	11.4 - 12.7	40	30	100	3/8"
1D47010600	Mandrel for Tube Expander, 10.6 + 11.4 mm					
1G47011400	Cage for Tube Expander, 11.4 mm					
1R470114S0	Rolls for Tube Expander, 11.4 mm					
1W47012000	Tube Expander complete, 12 mm	12.0 - 13.8	40	30	100	3/8"
1D47012000	Mandrel for Tube Expander, 12 mm					
1G47012000	Cage for Tube Expander, 12 mm					
1R470120S0	Rolls for Tube Expander, 12 + 12.6 mm					
1W47012600	Tube Expander complete, 12.6 mm	12.6 - 14.6	40	30	100	3/8"
1D47012600	Mandrel for Tube Expander, 12.6, 13 + 13.8 mm					
1G47012600	Cage for Tube Expander, 12.6 mm					
1R470120S0	Rolls for Tube Expander, 12 + 12.6 mm					

## No. 47 - Self-feeding Tube Expander with long reach

Art.-No.	Article	Expansion (mm)	Length of rolls (mm)	Length of expansion	Reach (mm)	Square shaft
1W47013000	Tube Expander complete, 13 mm	13.0 - 15.0	40	30	100	3/8"
1D47012600	Mandrel for Tube Expander, 12.6, 13 + 13.8 mm					
1G47013000	Cage for Tube Expander, 13 mm					
1R470130S0	Rolls for Tube Expander, 13 mm					
1W47013801	Tube Expander complete, 13.8 mm	13.8 - 15.9	40	30	100	3/8"
1D47012600	Mandrel for Tube Expander, 12.6, 13 + 13.8 mm					
1G47013800	Cage for Tube Expander, 13.8 mm					
1R470138S0	Rolls for Tube Expander, 13.8 + 14.5 mm					
1W47014501	Tube Expander complete, 14.5 mm	14.5 - 16.6	40	30	100	3/8"
1D47014500	Mandrel for Tube Expander, 14.5, 15 + 15.5 mm					
1G47014500	Cage for Tube Expander, 14.5 mm					
1R470138S0	Rolls for Tube Expander, 13.8 + 14.5 mm					
1W47015001	Tube Expander complete, 15 mm	15.0 - 17.3	40	30	100	3/8"
1D47014500	Mandrel for Tube Expander, 14.5, 15 + 15.5 mm					
1G47015000	Cage for Tube Expander, 15 mm					
1R470150S0	Rolls for Tube Expander, 15 mm					
1W47015501	Tube Expander complete, 15.5 mm	15.5 - 17.7	40	30	100	3/8"
1D47014500	Mandrel for Tube Expander, 14.5, 15 + 15.5 mm					
1G47015500	Cage for Tube Expander, 15.5 mm					
1R470155S0	Rolls for Tube Expander, 15.5 mm					
1W47016001	Tube Expander complete, 16 mm	16.0 - 18.4	40	30	100	3/8"
1D47016000	Mandrel for Tube Expander, 16 mm					
1G47016000	Cage for Tube Expander, 16 mm					
1R470160S0	Rolls for Tube Expander, 16 + 16.5 mm					
1W47016501	Tube Expander complete, 16.5 mm	16.5 - 18.6	40	30	100	3/8"
1D47016500	Mandrel for Tube Expander, 16.5, 17 + 17.5 mm					
1G47016500	Cage for Tube Expander, 16.5 mm					
1R470160S0	Rolls for Tube Expander, 16 + 16.5 mm					
1W47017001	Tube Expander complete, 17 mm	17.0 - 19.0	40	30	100	3/8"
1D47016500	Mandrel for Tube Expander, 16.5, 17 + 17.5 mm					
1G47017000	Cage for Tube Expander, 17 mm					
1R470170S0	Rolls for Tube Expander, 17 mm					
1W47017501	Tube Expander complete, 17.5 mm	17.5 - 19.7	40	30	100	3/8"
1D47016500	Mandrel for Tube Expander, 16.5, 17 + 17.5 mm					
1G47017500	Cage for Tube Expander, 17.5 mm					
1R470175S0	Rolls for Tube Expander, 17.5 mm					
1W47018401	Tube Expander complete, 18.4 mm	18.4 - 21.2	40	30	100	3/8"
1D47018400	Mandrel for Tube Expander, 18.4 mm					
1G47018400	Cage for Tube Expander, 18.4 mm					
1R470184S0	Rolls for Tube Expander, 18.4, 19 + 19.5 mm					
1W47019001	Tube Expander complete, 19 mm	19.0 - 21.5	40	30	100	3/8"
1D47019000	Mandrel for Tube Expander, 19 mm					
1G47019000	Cage for Tube Expander, 19 mm					
1R470184S0	Rolls for Tube Expander, 18.4, 19 + 19.5 mm					

## No. 47 - Self-feeding Tube Expander with long reach

Art.-No.	Article	Expansion (mm)	Length of rolls (mm)	Length of expansion	Reach (mm)	Square shaft
1W47019501	Tube Expander complete, 19.5 mm	19.5 - 21.8	40	30	100	3/8"
1D47019500	Mandrel for Tube Expander, 19.5 mm					
1G47019500	Cage for Tube Expander, 19.5 mm					
1R470184S0	Rolls for Tube Expander, 18.4, 19 + 19.5 mm					
1W47020001	Tube Expander complete, 20 mm	20.0 - 23.0	40	30	100	3/8"
1D47020000	Mandrel for Tube Expander, 20 mm					
1G47020000	Cage for Tube Expander, 20 mm					
1R470200S0	Rolls for Tube Expander, 20, 20.5 + 21 mm					
<b>Rolls with 2 parabolas / length of rolls 60 mm</b>						
1W47013800	Tube Expander complete, 13.8 mm	13.8 - 15.9	60	50	100	3/8"
1D47012600	Mandrel for Tube Expander, 12.6, 13 + 13.8 mm					
1G47013801	Cage for Tube Expander, 13.8 mm					
1R470138S1	Rolls for Tube Expander, 13.8 + 14.5 mm					
1W47014500	Tube Expander complete, 14.5 mm	14.5 - 16.6	60	50	100	3/8"
1D47014500	Mandrel for Tube Expander, 14.5, 15 + 15.5 mm					
1G47014501	Cage for Tube Expander, 14.5 mm					
1R470138S1	Rolls for Tube Expander, 13.8 + 14.5 mm					
1W47015000	Tube Expander complete, 15 mm	15.0 - 17.3	60	50	100	3/8"
1D47014500	Mandrel for Tube Expander, 14.5, 15 + 15.5 mm					
1G47015001	Cage for Tube Expander, 15 mm					
1R470150S1	Rolls for Tube Expander, 15 mm					
1W47015500	Tube Expander complete, 15.5 mm	15.5 - 17.7	60	50	100	3/8"
1D47014500	Mandrel for Tube Expander, 14.5, 15 + 15.5 mm					
1G47015501	Cage for Tube Expander, 15.5 mm					
1R470155S1	Rolls for Tube Expander, 15.5 mm					
1W47016000	Tube Expander complete, 16 mm	16.0 - 18.4	60	50	100	3/8"
1D47016000	Mandrel for Tube Expander, 16 mm					
1G47016001	Cage for Tube Expander, 16 mm					
1R470160S1	Rolls for Tube Expander, 16 + 16.5 mm					
1W47016500	Tube Expander complete, 16.5 mm	16.5 - 18.6	60	50	100	3/8"
1D47016500	Mandrel for Tube Expander, 16.5, 17 + 17.5 mm					
1G47016501	Cage for Tube Expander, 16.5 mm					
1R470160S1	Rolls for Tube Expander, 16 + 16.5 mm					
1W47017000	Tube Expander complete, 17 mm	17.0 - 19.0	60	50	100	3/8"
1D47016500	Mandrel for Tube Expander, 16.5, 17 + 17.5 mm					
1G47017001	Cage for Tube Expander, 17 mm					
1R470170S1	Rolls for Tube Expander, 17 mm					
1W47017500	Tube Expander complete, 17.5 mm	17.5 - 19.7	60	50	100	3/8"
1D47016500	Mandrel for Tube Expander, 16.5, 17 + 17.5 mm					
1G47017501	Cage for Tube Expander, 17.5 mm					
1R470175S1	Rolls for Tube Expander, 17.5 mm					
1W47018400	Tube Expander complete, 18.4 mm	18.4 - 21.2	60	50	100	3/8"
1D47018400	Mandrel for Tube Expander, 18.4 mm					
1G47018401	Cage for Tube Expander, 18.4 mm					
1R470184S1	Rolls for Tube Expander, 18.4, 19 + 19.5 mm					

## No. 47 - Self-feeding Tube Expander with long reach

Art.-No.	Article	Expansion (mm)	Length of rolls (mm)	Length of expansion	Reach (mm)	Square shaft
1W47019000	Tube Expander complete, 19 mm	19.0 - 21.5	60	50	100	3/8"
1D47019000	Mandrel for Tube Expander, 19 mm					
1G47019001	Cage for Tube Expander, 19 mm					
1R470184S1	Rolls for Tube Expander, 18.4, 19 + 19.5 mm					
1W47019500	Tube Expander complete, 19.5 mm	19.5 - 21.8	60	50	100	3/8"
1D47019500	Mandrel for Tube Expander, 19.5 mm					
1G47019501	Cage for Tube Expander, 19.5 mm					
1R470184S1	Rolls for Tube Expander, 18.4, 19 + 19.5 mm					
1W47020000	Tube Expander complete, 20 mm	20.0 - 23.0	60	50	100	3/8"
1D47020000	Mandrel for Tube Expander, 20 mm					
1G47020001	Cage for Tube Expander, 20 mm					
1R470200S1	Rolls for Tube Expander, 20, 20.5 + 21 mm					
1W47020500	Tube Expander complete, 20.5 mm	20.5 - 23.6	60	50	100	3/8"
1D47020500	Mandrel for Tube Expander, 20.5 mm					
1G47020501	Cage for Tube Expander, 20.5 mm					
1R470200S1	Rolls for Tube Expander, 20, 20.5 + 21 mm					
1W47021000	Tube Expander complete, 21 mm	21.0 - 24.0	60	50	100	3/8"
1D47021000	Mandrel for Tube Expander, 21 + 22 mm					
1G47021001	Cage for Tube Expander, 21 mm					
1R470200S1	Rolls for Tube Expander, 20, 20.5 + 21 mm					
1W47022000	Tube Expander complete, 22 mm	22.0 - 25.0	60	50	100	3/8"
1D47021000	Mandrel for Tube Expander, 21 + 22 mm					
1G47022001	Cage for Tube Expander, 22 mm					
1R470220S1	Rolls for Tube Expander, 22 mm					
1W47023000	Tube Expander complete, 23 mm	23.0 - 26.0	60	46	100	1/2"
1D47023000	Mandrel for Tube Expander, 23 + 24 mm					
1G47023001	Cage for Tube Expander, 23 mm					
1R470230S1	Rolls for Tube Expander, 23 mm					
1W47024000	Tube Expander complete, 24 mm	24.0 - 27.0	60	46	100	1/2"
1D47023000	Mandrel for Tube Expander, 23 + 24 mm					
1G47024001	Cage for Tube Expander, 24 mm					
1R470240S1	Rolls for Tube Expander, 24 + 25 mm					
1W47026000	Tube Expander complete, 26 mm	26.0 - 29.0	60	46	100	1/2"
1D47026000	Mandrel for Tube Expander, 25 + 26 mm					
1G47026001	Cage for Tube Expander, 26 mm					
1R470260S1	Rolls for Tube Expander, 26 + 27 mm					
1W47028000	Tube Expander complete, 28 mm	28.0 - 31.0	60	46	100	1/2"
1D47028000	Mandrel for Tube Expander, 27 + 28 mm					
1G47028001	Cage for Tube Expander, 28 mm					
1R470280S1	Rolls for Tube Expander, 28 + 29 mm					
1W47030000	Tube Expander complete, 30 mm	30.0 - 33.0	60	46	100	1/2"
1D47030000	Mandrel for Tube Expander, 29 + 30 mm					
1G47030001	Cage for Tube Expander, 30 mm					
1R470300S1	Rolls for Tube Expander, 30 + 31 mm					

Other dimensions on request



## No. 48 - Self-feeding Tube Expander for taper expansion of tube ends before welding

Art.-No.	Article	Expansion (mm)	Square shaft
1W48009600	Tube Expander for taper expansion complete, 9.6 mm	9.6 - 12.0	9
1W48010600	Tube Expander for taper expansion complete, 10.6 mm	10.6 - 13.0	9
1W48011600	Tube Expander for taper expansion complete, 11.6 mm	11.6 - 14.5	9
1W48012600	Tube Expander for taper expansion complete, 12.6 mm	12.6 - 15.7	9
1W48013600	Tube Expander for taper expansion complete, 13.6 mm	13.6 - 16.7	9
1W48014600	Tube Expander for taper expansion complete, 14.6 mm	14.6 - 18.2	9
1W48015500	Tube Expander for taper expansion complete, 15.5 mm	15.5 - 19.6	9
1W48016400	Tube Expander for taper expansion complete, 16.4 mm	16.4 - 21.4	9
1W48017400	Tube Expander for taper expansion complete, 17.4 mm	17.4 - 22.4	9
1W48018400	Tube Expander for taper expansion complete, 18.4 mm	18.4 - 23.9	9
1W48019000	Tube Expander for taper expansion complete, 19 mm	19.0 - 24.5	9
1W48020000	Tube Expander for taper expansion complete, 20 mm	20.0 - 25.5	9
1W48021000	Tube Expander for taper expansion complete, 21 mm	21.0 - 26.5	9
1W48022000	Tube Expander for taper expansion complete, 22 mm	22.0 - 27.5	12
1W48023000	Tube Expander for taper expansion complete, 23 mm	23.0 - 29.0	12
1W48024000	Tube Expander for taper expansion complete, 24 mm	24.0 - 30.0	12
1W48025000	Tube Expander for taper expansion complete, 25 mm	25.0 - 31.0	12
1W48026000	Tube Expander for taper expansion complete, 26 mm	26.0 - 32.0	12
1W48027000	Tube Expander for taper expansion complete, 27 mm	27.0 - 33.0	14
1W48028000	Tube Expander for taper expansion complete, 28 mm	28.0 - 34.0	14
1W48029000	Tube Expander for taper expansion complete, 29 mm	29.0 - 35.0	14
1W48030000	Tube Expander for taper expansion complete, 30 mm	30.0 - 36.0	14
1W48032000	Tube Expander for taper expansion complete, 32 mm	32.0 - 38.0	14
1W48034000	Tube Expander for taper expansion complete, 34 mm	34.0 - 40.0	14
1W48036000	Tube Expander for taper expansion complete, 36 mm	36.0 - 42.0	14
1W48038000	Tube Expander for taper expansion complete, 38 mm	38.0 - 44.0	16
1W48040000	Tube Expander for taper expansion complete, 40 mm	40.0 - 47.0	16
1W48042000	Tube Expander for taper expansion complete, 42 mm	42.0 - 50.0	16
1W48044000	Tube Expander for taper expansion complete, 44 mm	44.0 - 53.0	18
1W48046000	Tube Expander for taper expansion complete, 46 mm	46.0 - 55.0	18
1W48048000	Tube Expander for taper expansion complete, 48 mm	48.0 - 57.0	18
1W48050000	Tube Expander for taper expansion complete, 50 mm	50.0 - 59.0	18

Other dimensions on request

## Drive Technology

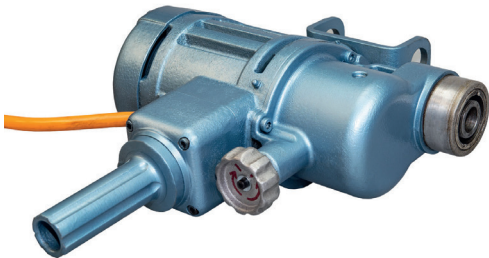
Electronic Expansion System [upon request](#)

Electronic Torque Control Unit  
WSR – CU – 400



Proven technology in a new compact design.

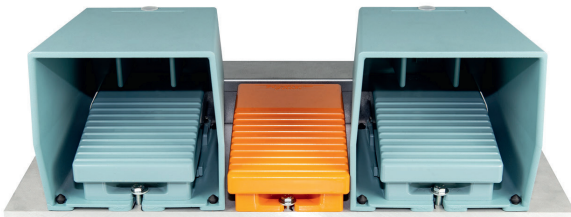
Motor



Telescopic Spindle



Foot Switch





## Drive Technology

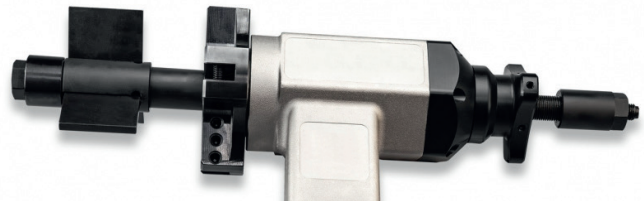
Air Motor with adjustable torque control [upon request](#)



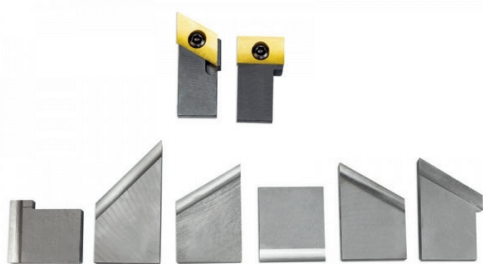
## Pipe Working

Bevelling Machine  
electric / air driven

upon request



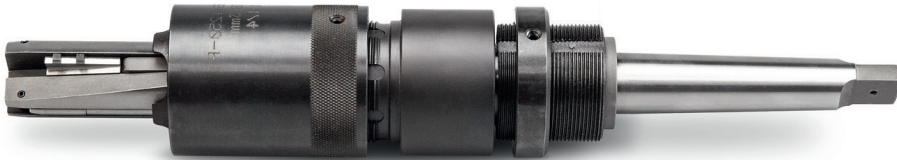
## Accessories



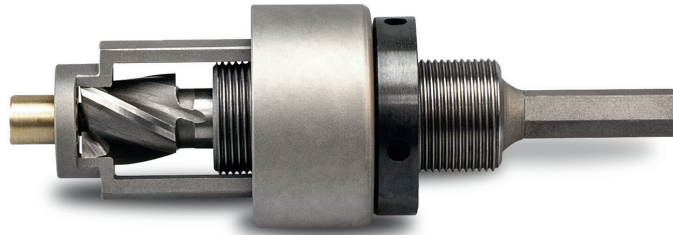
Blades  
hard metal / HSS

## Pipe Working

Groove Cutting Tool [upon request](#)



## Pipe Working



### Tube End Facer

Art.-No.	Article	Cutter- $\phi$ (mm)	Shaft size
1W66006800	Tube End Facer for tube $\phi$ 6.8 / 5.8 mm	8	3/8" oder MK
1W66008500	Tube End Facer for tube $\phi$ 8.5 / 7.75 mm	9,5	3/8" oder MK
1W66010400	Tube End Facer for tube $\phi$ 10.4 / 9.1 mm	11,5	3/8" oder MK
1W66014500	Tube End Facer for tube $\phi$ 14.5/12.5 mm	15,5	3/8" oder MK

Other dimensions on request